

R & S Industries, Inc.



SILOS



R & S ARROWHEAD SILO EQUIPMENT DESCRIPTIONS:

SILO TANK INCLUDES:

- SQUARE ROOF FOR 22% ADDITIONAL WORK AREA OVER ROUND ROOFS
- UPPER FRAME WITH 3'-9" CLEARANCE UNDER CONE
- SILO CONE WITH 50 DEGREE SLOPE
- SIX INTERNALLY MOUNTED AERATION PADS WITH SOLENOID AND AIR LINES
- 10" DISCHARGE BUTTERFLY VALVE WITH AIR ACTUATOR AND SOLENOID
- EMERGENCY SLIDE GATE
- 4" PNEUMATIC FILL LINE WITH CAMLOCK FITTINGS
- WEIGHTED TYPE PRESSURE RELIEF VALVE PROTECTS SILO FROM OVERPRESSURE
- INSPECTION PORT IN TOP OF SILO
- SILO TOP HANDRAILS WITH TOEBOARDS
- OSHA TYPE CAGED LADDER(S)
- ONE COAT OF PRIMER AND ONE TOP COAT OF INDUSTRIAL ENAMEL PAINT
- ELECTRICAL WIRING IN EMT CONDUIT TO JUNCTION BOX
- REQUIRED AIR LINE FILTER / REGULATOR INSTALLED
- ***** WEATHER TIGHT ENCLOSURE FOR AIR VALVES WHEN PURCHASED WITH COMPLETE CONCRETE PLANT *****

DOUBLE WALL SILO PARTITION WITH SPLIT 50/50 OR 1/3-2/3 INCLUDES:

- UPPER FRAME WITH 3'-9" CLEARANCE
- SILO CONE WITH 50 DEGREE SLOPE
- 2 - 10" DISCHARGE BUTTERFLY VALVES WITH AIR ACTUATOR AND SOLENOID
- SIX INTERNALLY MOUNTED AERATION PADS WITH SOLENOID AND AIR LINES
- 2 - EMERGENCY SLIDE GATES
- 2 - 4" PNEUMATIC FILL LINES WITH CAMLOCK FITTINGS - ONE PER COMPARTMENT
- 2 - WEIGHTED TYPE PRESSURE RELIEF VALVES PROTECTS SILO FROM OVERFILLING
- 2 - INSPECTION PORTS IN TOP OF SILO

20'-0" BOLT-TOGETHER LOWER SUPPORT LEGS INCLUDING:

- EXTENSION FOR 4" PNEUMATIC FILL LINE
- CAGED LADDER EXTENSION



R & S ARROWHEAD SILO EQUIPMENT DESCRIPTIONS FOR OPTIONAL EQUIPMENT:



- CEMENT WEIGHT BATCHERS INCLUDING:
- THREE NTEP CERTIFIED COMPRESSION STYLE LOAD CELLS
- SIGNAL-TRIM STAINLESS STEEL SUMMING BOX
- LOAD CELLS AND SUMMING BOX ARE INSTALLED AND WIRED
- 8" DISCHARGE BUTTERFLY VALVE WITH AIR ACTUATOR
- INCHING TYPE SOLENOID AND FLOW CONTROL VALVES
- MICRO SWITCH FOR DISCHARGE BUTTERFLY VALVE INSTALLED AND WIRED
- AIR VIBRATOR WITH SOLENOID AND AIR LINE INSTALLED
- THREE ETERNALLY MOUNTED AERATION PADS WITH SOLENOID AND AIR LINES
- SEAMLESS GUM-RUBBER DISCHARGE BOOT.
- TOP MOUNTED INSPECTION PORT
- NOTE: VOLUME OF 10 YARD BATCHER 93 CUBIC/FT.
- NOTE: VOLUME OF 12 YARD BATCHER 111 CUBIC/FT.

UPPER SAFETY DECK FOR CEMENT BATCHER / SCREW CONVEYOR INCLUDES:

- HEAVY-DUTY BAR GRADING WALK SURFACE
- HANDRAIL WITH TOEBOARD
- STEP-OFF DECK FROM CAGED LADDER

LOWER SAFETY DECK FOR SERVICING CONVEYOR DRIVE AND BATCHER DISCHARGE:

- HEAVY-DUTY BAR GRADING WALK SURFACE
- HANDRAIL WITH TOEBOARD
- STEP-OFF DECK FROM CAGED LADDER

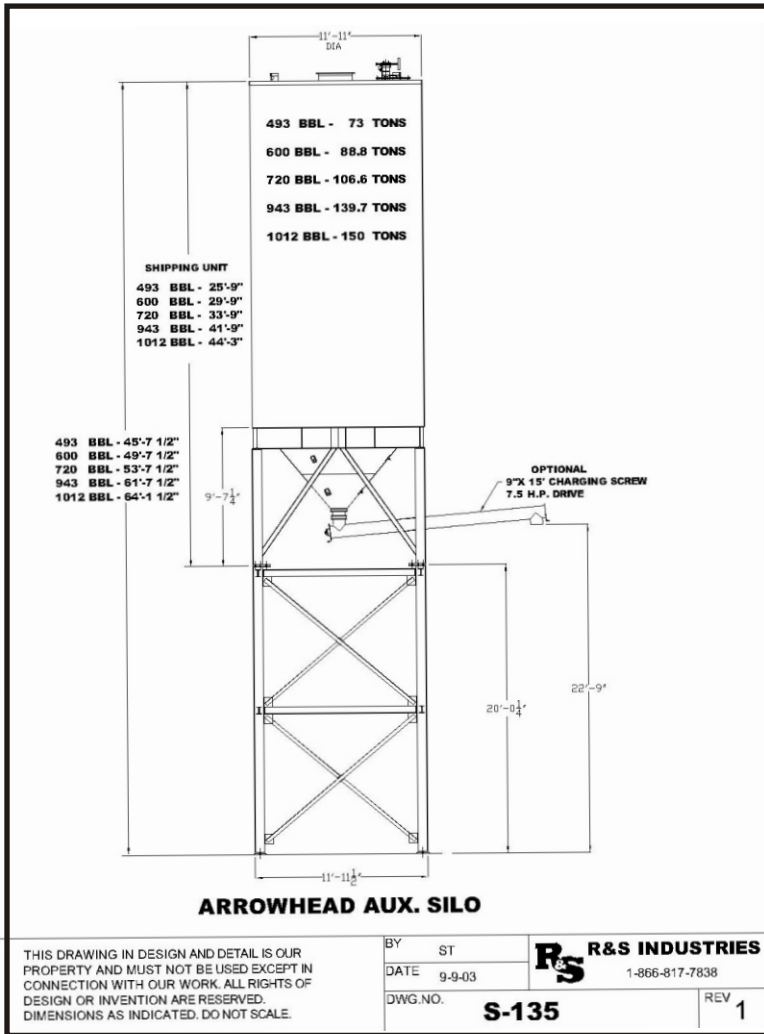
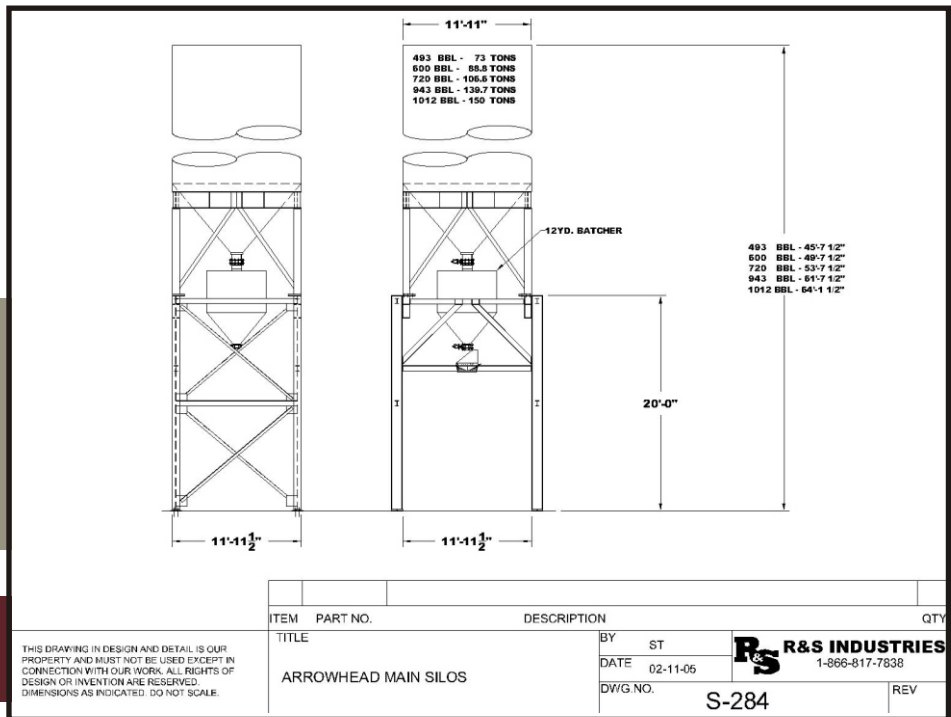
LADDER CLIMBERS DEVICE REPLACES CAGES ON LADDER INCLUDING:

- SAFETY CABLE
- CLIMBING HARNESS AND SAFETY CATCH DEVICE





Also available:
Vertical Pig Silo



OPTIONAL EQUIPMENT FOR ARROWHEAD SILOS

- DUST CONTROL EQUIPMENT
- OVERFILL PROTECTION SYSTEMS
- BIN LEVEL INDICATORS
- 5" PNEUMATIC FILL LINES
- 10 OR 12 CUBIC YARD WEIGHT BINS
- EXTENDED SUPPORT LEGS
- DOUBLE WALL PARTITION FOR SECOND COMPARTMENT
- SAFETY DECKS
- SCREW CONVEYORS
- AIR SLIDES
- AERATION BLOWERS

FEATURES FOR AUXILIARY ARROWHEAD SILOS EQUIPMENT DESCRIPTIONS:

9" X 15'-0" SCREW CONVEYOR (RATED AT 1200 CU/FT/HR) INCLUDES:

-
- 10 HP TEFC MOTOR WITH MOTOR STARTER AND WIRING

12" X 15'-0" SCREW CONVEYOR (RATED AT 3800 CU/FT/HR) INCLUDES:

- 15 HP TEFC MOTOR WITH MOTOR STARTER AND WIRING

10" X 15'-0" AIR SLIDE (RATED AT 4000 CU/FT/HR) INCLUDES:

-



R & S Industries, Inc.
P. O. Box 88
Brownwood, TX 76804
866-817-7838
www.randsinc.com