

STEAM-FLO® Series Steam Generators

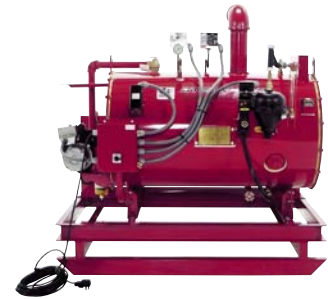
370 - 845 Lbs. per hour of saturated steam in minutes • Continuous, Unlimited Steam
Simple Operation • Easy Maintenance • Built To Last



Model SF-25
LP/NG-Fired, leg mount



Self-contained Model SF-11, Oil-Fired with water tank, generator and highway trailer



Skid Mounted SF-11, Oil-Fired

STEAM-FLO® STEAM GENERATORS

Sioux has built Steam-Flo® steam generators since 1939. Thousands are in operation worldwide. The Sioux Steam-Flo® line provides low pressure steam for a variety of applications. The Steam-Flo® vessel is constructed from 1/4" boiler plate steel, and will give years of service with minimal maintenance. Low water sensor switch and automatic water feeder maintain water level and provide low-water shutdown.

- ✓ Registered with National Board of Boiler and Pressure Vessel Inspectors.
- ✓ Meets Requirements of CSD-1 of the ASME Code.
- ✓ Built to Section IV of the ASME code.

FEATURES:

BENEFITS:

3-pass dry Scotch boiler

Smaller, lighter and much more efficient than single pass designs, saves space and reduces operating costs

Access ports

Easy inspection and maintenance

Low exhaust stack temperature

Safety and energy efficient design

Custom options available

You can obtain the best equipment for your specific application

Few moving parts

Low maintenance

Electrical Cord with GFCI and plug

GFCI protects operator and unit in case of electrical overload

**CUSTOM
UNITS
AVAILABLE!**



Reliability Since 1939

STEAM-FLO® Series Steam Generators

STEAM-FLO®

Specifications - Leg-mount model with Insulation Option

Model	SF-11	SF-20	SF-25
Fuel	Oil, LP, Natural Gas	Oil	LP or Natural Gas
Boiler Horsepower	10.7 BHP	19.7 BHP	24.5 BHP
Steam Output**	370 Lbs./Hr. (168 Kg/Hr)	680 Lbs./Hr. (308 Kg/Hr)	845 Lbs./Hr. (383 Kg/Hr)
Firing Rate (#2 Fuel Oil)	3.05 GPH (11.5 LPH)	5.65 GPH (21.4 LPH)	N/A
Firing Rate (LP Gas, GPH)	4.66 GPH (17.6 LPH)	N/A	11 GPH (41.6 LPH)
Firing Rate (Natural Gas, CFH)	427 CFH (12.1 m ³ Hr)	N/A	1,010 CFH (28.6 m ³ Hr)
Input BTU/Hour	427,000 (125 KW)	791,000 (232 KW)	1,010,000 (296 KW)
Max. Steam Working Pressure	15 PSI	15 PSI	15 PSI
Operating Steam Working Pressure	5-10 PSI	5-10 PSI	5-10 PSI
Max. Temperature	250°F (121°C)	250°F (121°C)	250°F (121°C)
Heating Tube Surface Area	65 Ft ² (6.04 m ²)	118 Ft ² (11 m ²)	118 Ft ² (11 m ²)
Boiler Volume (Approx.)	55 Gallons (208 Liters)	135 Gallons (511 Liters)	135 Gallons (511 Liters)
Oil Fuel Tank Capacity (Optional)	36 Gallons (136 Liters)	65 Gallons (246 Liters)	N/A
Efficiency (Approx.)	84%	83%	81%
Operating Current (AMPS)	3 Amps (Oil) 4 Amps (Gas)	3 Amps	4 Amps
Machine Dimensions (Approx.)	60"L x 40"W x 51"H (152 x 102 x 130 cm)	70"L x 51"W x 61"H (178 x 129.5 x 155 cm)	85"L x 51"W x 61"H (216 x 129.5 x 155 cm)
Shipping Dimensions (Approx.)	85"L x 54"W x 60"W (216 x 137 x 152 cm)	76"L x 58"W x 72"H (193 x 147 x 183 cm)	94"L x 58"W x 72"H (238.8 x 147 x 183 cm)
Machine Weight, Dry (Approx.)	900 Lbs. (408 Kg)	1,200 Lbs. (544 Kg)	1,200 Lbs. (544 Kg)
Shipping Weight (Approx.)	1,220 Lbs. (554 Kg)	1,820 Lbs. (825 Kg)	1,910 Lbs. (866 Kg)

Specifications - Leg-mount model without Insulation Option

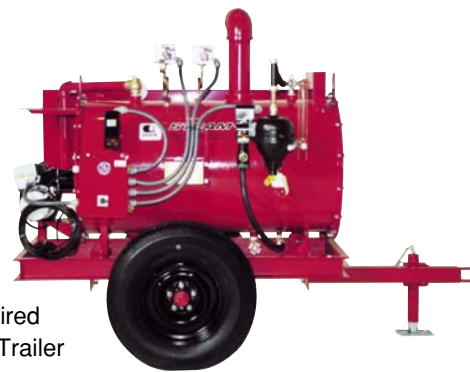
Model	SF-11	SF-20	SF-25
Boiler Horsepower	10.3 BHP	19.2 BHP	24 BHP
Steam Output**	355 Lbs./Hr. (161 Kg/Hr)	660 Lbs./Hr. (300 Kg/Hr)	821 Lbs./Hr. (372 Kg/Hr)
Efficiency (Approx.)	81%	80%	79%
Insulation Cost Payback Period (Approx.)*	2.2 Years	2.1 Years	1.9 Years

*Based on standard operating conditions (1,200 hour usage per year).

**212°F, which is the standard boiler industry performance rating temperature.

OPTIONS:

- Portable Non-Highway Trailer Option Includes: 15" Pneumatic Tires, 36-Gallon Fuel Tank, Trailer Hitch
- Over the Road Highway-Rated 2-Wheel Trailer
- Skid Mounted with 36-Gallon Fuel Tank
- Insulation Option Includes: Protective Stainless Steel Outer Wrap and 1" fiberglass insulation
- Available as a Hot Water Boiler



SF-11, Oil-Fired
Non-Highway Trailer

Specifications may vary +/-10% depending on usage application, local conditions, inlet temperature, etc.

Steam-Flo® is a registered trademark of Sioux Corporation.

This product is covered by one or more U.S. patents and/or U.S. patents pending. Copyright 2008 Sioux Corporation. No portion of this literature may be reproduced without express written permission of Sioux Corporation.



Reliability Since 1939

For more information, call us Toll-free at (888) 763-8833
or (605) 763-3333 and visit us at www.sioux.com

SIoux CORPORATION

One Sioux Plaza • Beresford, SD 57004-1500

Toll-free: (888) 763-8833 • Tel: (605) 763-3333 • Fax: (605) 763-3334

email@sioux.com • www.sioux.com

