

Standard Package

Hardware

1. Full manual control panel that also functions as the junction box.
2. Control PC with
 - Windows XP® operating system,
 - Minimum 2GHz CPU, 256MB RAM, 80GB Hard Drive, CD ROM,
 - Two audio speakers,
 - One parallel, one serial ports and USB ports,
 - Ethernet card.
3. 17" flat screen LCD monitor.
4. OKI Microline 186® dot matrix printer.
5. Analog to Digital signal converter.
6. System wiring list and schematics.
7. Operator's manual.

Software

Sysdyne batching system software, a Windows XP based batching software with client/server database that allows better data sharing.

Service

- Free customer support over the phone.
- Free software upgrade.
- Free remote diagnosis and online support.

Features

1. Automatic and manual control of batching 2 cements, 3 aggregates, 4 admixtures and 1 metered water, 1 cement aerator, 1 cement vibrator, 1 aggregate vibrator, conveyor, 1 cement scale and 1 aggregate scale, discharge boot.
2. Inventory tracking for all materials on automatic and manual* batches.
3. Material ship-in history.
4. Records batch weights on manual and automatic batches.
5. One moisture probe interface.
6. Layered passwords for better access management.
7. Daily automatic data backup.
8. Order entry.
9. Job scheduling.
10. Ticketing with flexible ticket format.
11. Print ticket to laser or inkjet printers.
12. Batch weights for review and print.
13. Unlimited data storage for batch records, mix designs, trucks, jobs, customers and projects, etc.
14. Filtered data retrieval for any give period.
15. Wash water compensation.
16. Management reports to track production by plant, mix, truck, driver, salesman, load, customer and job for the time period of your choice. Estimate of material requirements.
17. Admixture line clear feature.

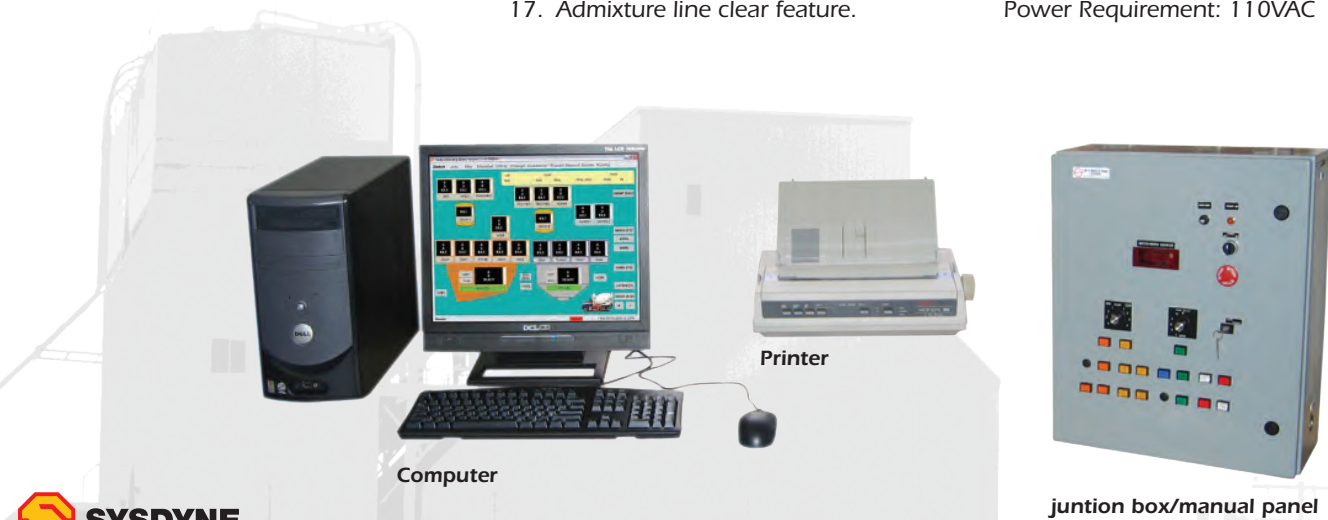
Options

1. Expansion for more aggregate and cement control.
2. Up to 6 additional analog inputs (from scales, moisture probes or other devices)
3. Slurry water compensation.
4. ASCII data export.
5. Excel file export.
6. Interface to QuickBooks accounting software. Customized interface to any accounting software.
7. Interface to dispatching software.
8. Web-based central dispatch.
9. Second printer of your choice: laser, inkjet or matrix.
10. Dynamic moisture probe.
11. Digital scale indicators with analog outputs.
12. Digital water meter/counter.
13. Rescue Kit - preloaded emergency backup software kit.
14. All above options are readily available. Contact us if you require more.

Physical Specifications

Manual control panel/Junction box: (21"W, 25"H, 8"D)
Power Requirement: 110VAC

Scout Batching System



Sysdyne
Stamford, Connecticut USA
Telephone: 1.877.sysdyne
1.203.327.3649
Facsimile: 1.203.325.3600
Email: Service@sysdynecorp.com
Web site: www.sysdynecorp.com

Sysdyne reserves the right to change above information without notice.
* Applies to on-screen manual batch only.

Scout

The most economical all-in-one solution

A concrete batching automation system is a necessary tool for concrete producers to grow their business and stay competitive. Sysdyne's® Scout™ is a full featured system developed with **Windows® XP** technology, **client/server database**, solid electronic design and rugged fabrication. Its sophisticated embedded microprocessor technology ensures real-time data processing and control. It meets the most restricted tolerance requirements with little or no jogging. The Scout's unparalleled accuracy and consistency has helped our customers with construction projects at John F. Kennedy International airport (New York), Raleigh International Airport (North Carolina), Trump Tower (Manhattan, New York), "Ground Zero" (Manhattan, New York), Beltway 8 (circumnavigating Houston, Texas) and numerous other high profile projects.

The Scout system is **the most comprehensive product** in the market. The standard package consists of manual control push-button panel that also functions as a junction box, a state-of-art personal computer fully loaded with Sysdyne batching software, a 17" flat screen LCD monitor and a OKIDATA® dot matrix printer (for multi-copy ticket printing). You can batch in U.S. or metric units. The system is compliant with **D.O.T.** regulations in New York, Minnesota, Massachusetts and California.

Scout's flexible design have made its application in

- Dry batch plants.
- Decumulative Plants.
- Precast/Prestress plants.
- Block plants.
- Pipe plants.
- Asphalt plants.

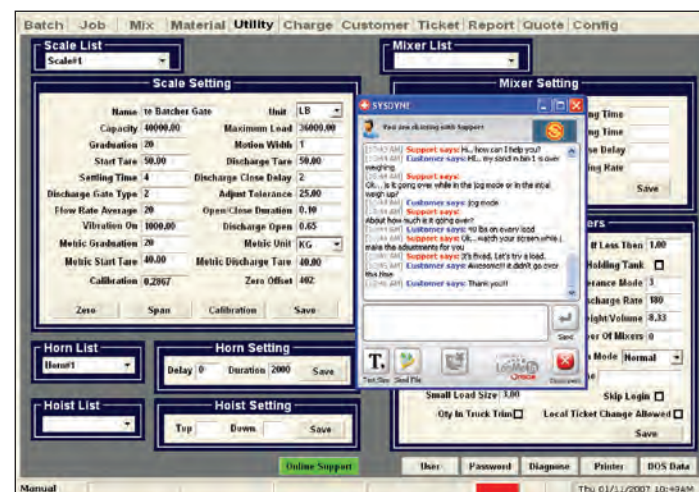
Sysdyne can and will customize a system for your special needs.

More batch for your buck – flexibility, efficiency and productivity

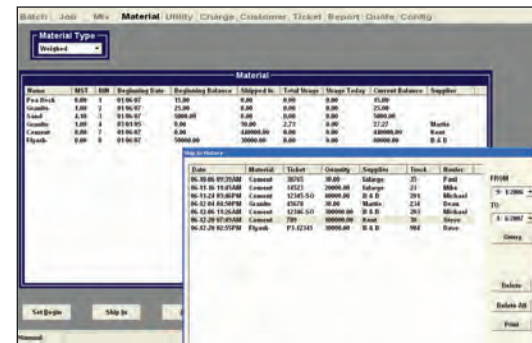
As fully automated as it is, the Scout allows the operator to interrupt the automation cycle any time he/she finds it necessary but still does not lose the cycle and its batch records. The system settings can be tailored to the exact behavior of your plant to ensure optimum operation. Our rugged manual operation design uses high quality 110VAC control buttons directly (no central signal conversion board) control each batch function, it warrants virtually no down time. **Remote batch** feature allows you to initiate jobs at an unattended plant. With high speed Internet access, there is no restriction in distance or cost for you to have a **mirror system** to monitor the operation or "assume command" of the batching computer.

High security and accountability

Scout's **layered passwords** assign different access levels to different individuals. You have flexibility to include or exclude some categories to a user. Its powerful database has **unlimited data storage**. Simply specify the time period of any records: tickets, batch weights, inventory, etc., you will find the data you are looking for even from 10 years ago. The system tracks inventory for all materials with detailed **ship-in history** of each material. The **inventory tracking** not only applies to automated batches, but also when the operator **batches manually** by clicking on-screen buttons!



Online support



Inventory tracking

Take control of your business

Scout provides wide range of **management reports** with the time period of your choice: plant analysis, material requirements, production of trucks, drivers, salesman, etc. All reports can be exported to an excel spreadsheet or printed on your choice of printers. The system works with **multiple printer ports** (parallel, USB or network) and all types of printers. The client/server **database** technology outperforms Microsoft Access® database technology with larger storage and better data sharing ability. It is made easier to interface with accounting, dispatching, truck tracking and other management software. With Internet access, **you are able to monitor your operation any time from anywhere in the world free of cost!**

User friendly

The batching aspect of our system has yet to meet anyone that cannot learn to batch within one day! That is over almost two thousand Sysdyne PC controlled systems. The **intuitive main screen** gives the operator instant confidence in understanding the connection to the plant. The screen icons are easily relocated for the operator's visual preference by using the "point, click and drag" method. You don't need to dig through a myriad of menus to find what you need. Every function is at a glance. Every on-screen button is active and clickable. The Scout provides **two manual backup systems**: one is the control console with 110VAC push buttons and selective switches; the other is by clicking each icon/button on the screen. Touch screen option is available. Reassignment of an output or input is with a few clicks of the mouse. Nowhere will you find it easier to **reconfigure I/Os**.

Worry Free

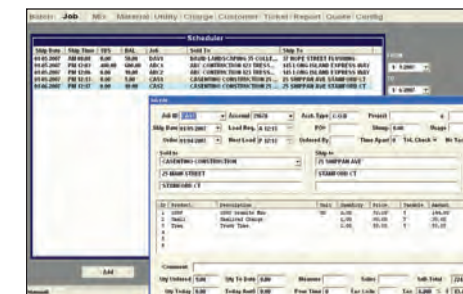
With Scout's rugged manual panel design and on-screen manual batch function, it virtually warrants zero downtime. No need to remember to save data. The system **automatically backs up** every day to 3 different locations: your hard drive, USB flash drive and if you put the batch system in your network you can back up to another PC. The Scout uses an **off-the-shelf personal computer** readily available at most any electronic store. If an unfortunate event such as a lightning strike or theft of the batch computer happens, a replacement computer can be virtually any PC running in Windows. You simply

- 1) either buy a new computer in a local store, use your laptop or use a computer in your office;
- 2) go to our web site to download the program and
- 3) load your backup data to the program.

You will be ready to go again. To make it even easier, you may use our **rescue kit**. Within one step, you will duplicate a new batch computer and you are up and running again.

Better for less

Scout is an **all-in-one solution**. All features that a concrete producer needs is included: order entry, job scheduling, ticketing, and reports... everything! By executing global resource leverage strategies, Sysdyne is able to lower our development and manufacturing costs and pass the benefits to you.



Job scheduling / order entry

We will roll up our sleeves for you

Customer satisfaction is Sysdyne's top priority. We have committed to provide timely support via phone, over the Internet and through field visits. Sysdyne batching software has a **built-in online support feature**. Help is a simple click away... and it's **FREE**. Sysdyne is the only company in the market that still provides **FREE customer support** over the phone and **FREE online upgrade**. Being Sysdyne's customer is a guarantee of quality lifetime service.

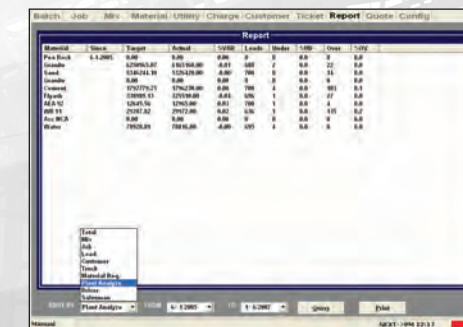
You are in good hands

Since 1976, Sysdyne has committed to provide the most reliable, flexible and affordable high quality batching automation products in the North and South America and other regions. Sysdyne is leading the market in bringing state-of-art computer and Internet technologies to the industry. We believe in innovation. We never stop improvements. We work hard to provide the very best products and service. We strongly believe it is a win-win relationship between customers and Sysdyne. There are no tricks or hidden charges in Sysdyne's products.

The staff at Sysdyne is a world-class team you can count on. We have on site linguists for English and Spanish, etc. Most of us are engineers. We do not rely on out-sourcing for any technical expertise. Customization is embraced, not discouraged. With our 30+ years in the concrete automation industry we are not afraid to tackle any job.



Free online upgrade



Management reports