



# 2012 International TerraStar

**TERRA** *Star*

Miles Ahead.



# 2012 International TerraStar



The reputation and heritage of International commercial trucks is unmatched...  
**Performance, Durability, Power**... now passed down to a new class of truck  
delivered through a dealer with commercial expertise.



# Overview



## International Strength:

Class 4- 16,000 lbs. GVW  
Class 5- 19,500 lbs. GVW  
7,000 lb s. front / 13,500 lbs. rear axle

## International Pride:

Industry's roomiest Conventional Cab  
Best-in-class frame strength  
Best-in-class visibility  
Diamond Logic

## International Power:

Powered by International's own  
MaxxForce 7 Advanced EGR engine

## International Versatility:

Allison 1000 transmission  
Diamond Logic

## International Support:

OnCommand  
900 Service & Parts locations in N.A.



# International Strength



Class 4 Maximum GVW:

**16,000 lbs.**

Class 5 Maximum GVW:

**19,500 lbs.**

Maximum Axle Strength (Front/Rear)\*:

**7000 / 13,500 lbs.**

\*Dana Spicer



# International Power



## Powered by MaxxForce 7 Advanced EGR Technology:

<b>Configuration</b>	V8
<b>Displacement</b>	6.4L (389 cu in.)
<b>Power Output</b>	220 hp - 325 hp @ 2600 rpm
<b>Torque Ratings</b>	560 ft lbs. – 760 ft lbs. @ 1400 rpm
<b>Aspiration</b>	Dual Sequential Turbocharged
<b>Combustion System</b>	Direct Injection
<b>Dry Engine Weight</b>	1225 lbs.



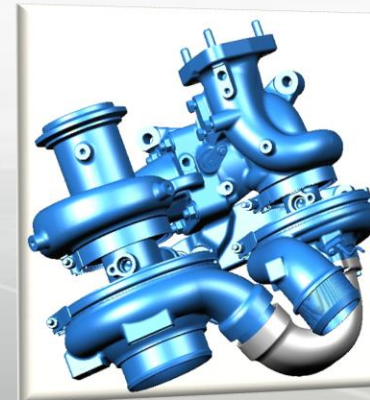
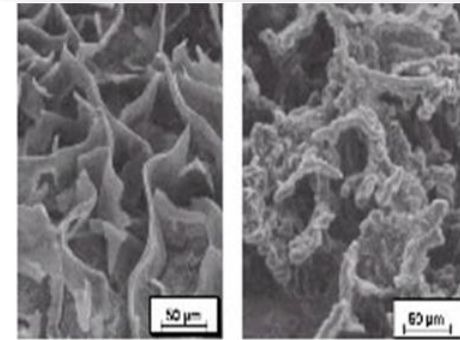
***MaxxForce 7 B-50 Life increased to 500,000 miles vs. existing 375,000 miles***

## Increased Durability & Strength:

- Compacted Graphite Iron Block
  - 75% greater tensile strength
  - 40% greater stiffness
  - 200% greater fatigue threshold
- 4-bolt main

## Improved Design:

- Largest main bearings in industry
  - Bearing clearances true to original tolerances
  - Consistent clearances= consistent lubrication
- Thinner casting walls= **lighter block**
- Dual Sequential Turbochargers
  - Wastegate to prevent overspeed/overboost
  - Excellent throttle response
  - Reduced replacement cost



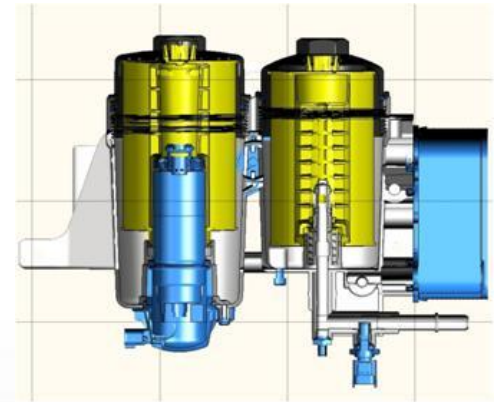
# International Power- Serviceability

## Fuel Filter Assembly:

- Integrated, engine mounted Primary & Secondary filters
- Electric lift pump
- Integrated fuel cooler

### Improvement:

- Easy, single-point access to both filters
- Integration reduces lines and leak points
- Electric lift pump eliminates hand-primer pump



## Hydraulic Roller Valve Lifters:

- **NEVER NEED ADJUSTMENT**

### Improvement:

- Eliminates the most complex required maintenance item
- Rolling element bearings reduce friction and camshaft stress
- Significantly quieter than traditional mechanical lifters



# International Power- Serviceability

## Crankcase Ventilation:

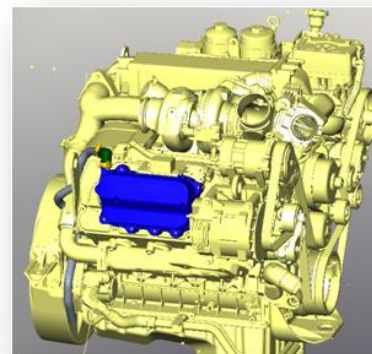
- Integrated breather with upper valve cover

## Improvement:

- **NEVER NEEDS MAINTENANCE**

## Engine Warranty:

- 3 year, 150,000 miles (Standard)

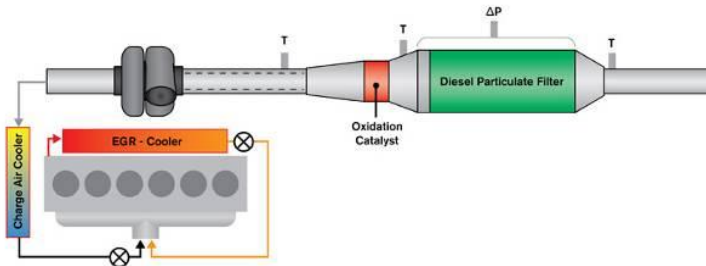


## 2010 Emissions Compliance (Full-time):

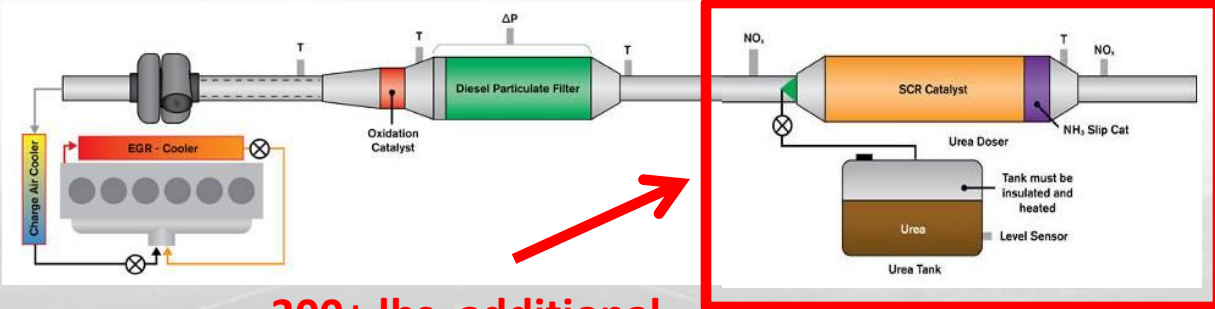


# International Power- Serviceability

Industry Exclusive Advanced EGR Technology:



No SCR Equipment Add-ons



300+ lbs. additional weight

TerraStar is NO-HASSLE solution for 2010 Emissions Standards



# International Pride



- 1 Best-in-class forward visibility (183")
- 2 Largest cab in class ( 87.9 sq ft.)
- 3 Diamond Logic electrical system pre-programmed features include pre-trip inspections, headlights on with wipers, and safety interlocks
- 4 All-new 300hp MaxxForce 7 engine featuring 660 ft. lb of torque. Purpose built for Medium Duty applications
- 5 **80,000 psi frame rail rating** combined with huck-bolted frame and cross-members to maximize durability
- 6 Commercial grade easy-tilt hood improves serviceability
- 7 No-hassle Advanced EGR emissions technology



# International Versatility

## Allison 1000 Transmission

- Industry proven transmission to meet the demands of any customer
- HS, RDS, EVS version available
- Shift Energy Management – for better engine/transmission integration to optimize the entire driveline



## Diamond Logic

- **Diamond Logic® allows engine, transmission, instrument panel, other vehicle components and truck body to communicate with each other electronically**
  - **Commercial grade** functionality and integration
  - **No aftermarket switch mounting or wiring** as body and equipment manufacturers can fully integrate their products
  - **Reduced installation time** with factory installed switches and remote power modules
  - **Turnkey solution** increases reliability and uptime, reduces repair costs
  - **Accurately pinpoint electrical problems** with self-diagnosing, self-monitoring system
  - **Greater reliability** due to simple wiring system and longer switch life

# International Support

## OnCommand:

Recognized as key component of Navistar's J.D. Power Customer Satisfaction Award

Knowledge	Control	Learning
Centralized service history detailed by VIN	A web-based emergency "concierge" system connecting customers, dealers and Navistar support groups to expedite vehicle repair	Training for fleet self-maintainers, including web-based and instructor-led courses.
Online parts catalog for easy sourcing, with user-friendly illustrations	Fixed parts pricing and services times across dealer network	
Online manuals and troubleshooting guides for expedited repairs	Instant credit for repair and maintenance	



# International Support

## 900 Parts & Service Locations in N. America

- Parts orders process & ship 24/7/365
- Largest parts distribution center in North America
- Complete line of replacement parts for all truck makes
- Diamond Advantage<sup>®</sup> Fleet Charge card – guaranteed consistent nationwide pricing throughout International's dealer network

