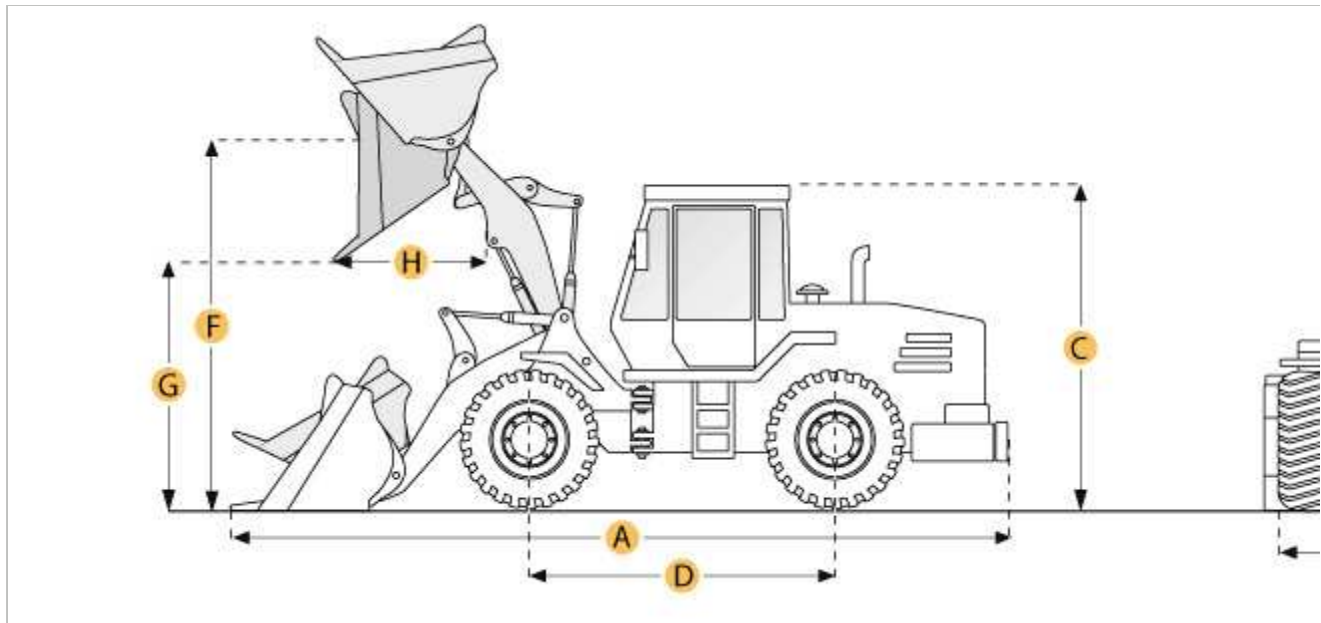


[Home](#) → [Spec Search](#) → [Mining](#) → [Wheel Loader](#) → [Volvo](#) → L180E

VOLVO L180E WHEEL LOADER

 Print specification



Selected Dimensions

Bucket

| | | |
|--------------------------------|-----------|---------|
| G. DUMP CLEARANCE AT MAX RAISE | 9.7 ft in | 2950 mm |
|--------------------------------|-----------|---------|

Dimensions

| | | |
|---------------------------------|------------|---------|
| A. LENGTH WITH BUCKET ON GROUND | 29.7 ft in | 9060 mm |
| B. WIDTH OVER TIRES | 9.7 ft in | 2950 mm |
| C. HEIGHT TO TOP OF CAB | 11.7 ft in | 3580 mm |
| D. WHEELBASE | 11.6 ft in | 3550 mm |
| E. GROUND CLEARANCE | 1.4 ft in | 440 mm |
| F. HINGE PIN - MAX HEIGHT | 14.7 ft in | 4480 mm |
| H. REACH AT MAX LIFT AND DUMP | 4.8 ft in | 1450 mm |

Specification

Engine

| | | |
|-----------|------------|----------|
| MAKE | Volvo | |
| MODEL | D12C LC E2 | |
| NET POWER | 300 hp | 223.7 kw |

| | | |
|---------------------|--------------|----------|
| GROSS POWER | 303 hp | 225.9 kw |
| POWER MEASURED @ | 1400 rpm | |
| DISPLACEMENT | 732.3 cu in | 12 L |
| TORQUE MEASURED @ | 1200 rpm | |
| MAX TORQUE | 1253.9 lb ft | 1700 Nm |
| NUMBER OF CYLINDERS | 6 | |
| ASPIRATION | turbocharged | |

Operational

| | | |
|---------------------------------|------------|----------|
| OPERATING WEIGHT | 58202 lb | 26400 kg |
| FUEL CAPACITY | 97.7 gal | 370 L |
| HYDRAULIC SYSTEM FLUID CAPACITY | 41.2 gal | 156 L |
| ENGINE OIL FLUID CAPACITY | 12.7 gal | 48 L |
| COOLING SYSTEM FLUID CAPACITY | 18.5 gal | 70 L |
| TRANSMISSION FLUID CAPACITY | 11.9 gal | 45 L |
| FRONT AXLE/DIFF FLUID CAPACITY | 11.9 gal | 45 L |
| REAR AXLE/DIFF FLUID CAPACITY | 14.5 gal | 55 L |
| STATIC TIPPING WEIGHT | 45790 lb | 20770 kg |
| TURNING RADIUS | 24.5 ft in | 7455 mm |
| OPERATING VOLTAGE | 24 V | |
| ALTERNATOR SUPPLIED AMPERAGE | 55 amps | |
| REAR AXLE OSCILLATION | 30 degrees | |
| TIRE SIZE | 26.5R25 L3 | |

Transmission

| | | |
|-------------------------|--------------|-----------|
| TYPE | Volvo HTE220 | |
| NUMBER OF FORWARD GEARS | 4 | |
| NUMBER OF REVERSE GEARS | 4 | |
| MAX SPEED - FORWARD | 23.1 mph | 37.2 km/h |
| MAX SPEED - REVERSE | 23.1 mph | 37.2 km/h |

Hydraulic System

| | | |
|-----------------------|--------------|-----------|
| RELIEF VALVE PRESSURE | 3625.9 psi | 25000 kPa |
| PUMP FLOW CAPACITY | 61.8 gal/min | 234 L/min |
| RAISE TIME | 7.2 sec | |
| DUMP TIME | 2 sec | |
| LOWER TIME | 3.7 sec | |

Bucket

| | | |
|-----------------------------|-------------------|--------------------|
| BREAKOUT FORCE | 46423 lb | 206.5 kN |
| DUMP CLEARANCE AT MAX RAISE | 9.7 ft in | 2950 mm |
| BUCKET WIDTH | 10.6 ft in | 3230 mm |
| BUCKET CAPACITY - HEAPED | 6 yd ³ | 4.6 m ³ |

Dimensions

| | | |
|------------------------------|------------|---------|
| LENGTH WITH BUCKET ON GROUND | 29.7 ft in | 9060 mm |
| WIDTH OVER TIRES | 9.7 ft in | 2950 mm |
| HEIGHT TO TOP OF CAB | 11.7 ft in | 3580 mm |
| GROUND CLEARANCE | 1.4 ft in | 440 mm |
| WHEELBASE | 11.6 ft in | 3550 mm |
| HINGE PIN - MAX HEIGHT | 14.7 ft in | 4480 mm |
| REACH AT MAX LIFT AND DUMP | 4.8 ft in | 1450 mm |



Viewing Photo 1 of 5