

WHITE STAR

CONTRACTOR'S GUIDE

White Star Publication

Limited to In-Stock Quantities

Fall 2011



Metropolitan Concrete Construction, Inc., Tulsa, OK

L to R: Jose Becerra, Antonio Bernal (President), Juan Jaramillo

SALES • RENTALS • SERVICE • PARTS • SUPPLIES

www.whitestarmachinery.com

5401 S. Mingo Road
Tulsa, OK 74146
918.622.7787
800.324.7368



WHITE STAR

Tulsa

is your

NEW



MORBARK

Dealer



- **Recycling**
- **Forestry**
- **Tree Care**
- **Sawmill**

**For all
your
Morbark
Equipment
& Service
Needs!**

**Call
Nick or Mike
at 918.622.7787**



We will be handling the Morbark® Beaver™ M6R, Morbark® Beaver™ M12D, Beaver™ M15R, and the Morbark® Beaver™ M18R. Come on in and see the Morbark lines.

www.whitestarmachinery.com

CONTRACTOR'S GUIDE

WHITE STAR

-Family Owned and Operated Since 1910!

IN THIS ISSUE

| | |
|--------------------------------------|---------|
| NEW Model E55 Bobcat Excavator | 2 |
| TAX BREAK | 3 |
| Used Equipment | 4-5 |
| Supplies | 6 |
| Parts | 7, 8, 9 |

METROPOLITAN CONCRETE CONSTRUCTION, INC.



Metropolitan Concrete Construction, Inc. has been in the concrete business for 9 years now. Owner, Antonio Bernal says his company started out like most companies do; small, himself and two other employees. With no equipment, Antonio rented what he needed

day to day. Antonio says he rang many doorbells to find work. Now, with 16 employees and a supply of equipment, there is no job too large for them to tackle and the company expects to continue to grow. Metropolitan Concrete is expanding their business to other states such as Kansas, Texas, Arkansas and more. Metropolitan Concrete Construction, Inc. is located at 12246 E. 60th St. in Tulsa.

Metropolitan Concrete provides all types of quality concrete work. They can do small jobs to large commercial projects. Their specialty lies in larger commercial jobs. They have provided concrete work to new buildings such as: clinics, hospitals, schools, warehouses, aircraft hangers, road paving and all types of metal buildings all the way from building the slab to the parking lots. Metropolitan Concrete makes sure to meet all the safety standards required by OSHA. They are a fully insured company including workers compensation for the safety of their employees and general contractors.

White Star Tulsa has assisted Antonio in growing his equipment inventory so he can take on the larger jobs. Metropolitan Concrete operates a Bobcat 337 Excavator, two E42 Excavators, a T185 and a T250 Track Loader, along with several ride-on and walk behind trowels, and concrete saws.

When Antonio isn't hard at work, his favorite hobby is riding his motorcycle with friends of the Harley Davidson Club.

When asked what additional information he would like us to know, Antonio took a moment to share these kind words: *"Thanks for giving me (Metropolitan Concrete Construction) the opportunity to thank White Star and Bobcat equipment for trusting us and giving us the opportunity to purchase the equipment necessary to keep growing. We look forward to continue to do business with White Star. We have received EXCELLENT SERVICES. Thank you so much."*

White Star Tulsa is honored to be a part of the success of Metropolitan Concrete Construction, Inc.



Antonio and his favorite hobby - his Harley Davidson!



NEW

Model E55 Bobcat Excavator!

Model E55 is the newest addition to the M-Series excavator lineup. The E55 is a conventional tailswing machine, sized to compete in the 5 ton class. It provides M-Series comfort and standard features for owners looking to replace a 341 or 337 Long Arm machine.



SPECIFICATIONS

| | |
|---|--|
| •Engine Emissions Tier (EPA):Interim Tier 4 Engine Fuel:Diesel Maximum Governed RPM:2200 RPM Horsepower:48.8 HP Turbocharged Engine:true | •Capacities Fuel Tank:21.1 gal |
| •Performance Operating Weight:12478 lbs Weight Class:5.5 t Travel Speed - High:3.1 mph Travel Speed - Low:1.9 mph Arm Digging Force:5868 lbf Bucket Digging Force:9442 lbf Rated Lift Capacity:4999 lbs Lift Radius:118 in Boom Swing - Left:75 deg Boom Swing - Right:50 deg Maximum Dig Depth:12.9 ft Max Dump Height:13.6 ft Maximum Reach at Ground Level:20 ft | •Hydraulic System Auxiliary Std Flow:20 GPM Auxiliary Pressure:3045 psi |
| | •Dimension Length:203.7 in Overall Length in Travel Position:203.7 in Width:77.2 in Height:100 in Height with Operator Cab:100 in |
| | •Features Air Conditioning:std Cab Enclosure:std Cab Heater:std Heater Air Conditioning:std Radio:opt Tail Swing Type:Conventional Engine Shutdown:std Auxiliary Hydraulics:std Secondary Auxiliary Hydraulics:opt Quick Tach System:std Rubber Track:std Selectable Auxiliary Hydraulic Flow: std Angle Blade:opt |



TAX BREAK



BUY • WORK • DEDUCT • SMILE

Bonus Depreciation and Section 179 Deductions Extended Through December 31, 2011

The Section 179 Deduction and Bonus Depreciation has been significantly enhanced for the tax year 2011 - giving businesses an incentive to invest in themselves by purchasing, financing or leasing new equipment.

What is Bonus Depreciation?

A 100% bonus depreciation deduction is included in the "Small Business Jobs & Credit Act" for qualified new equipment acquired and placed in service during 2011. The "Tax Relief Act" extends and expands the Bonus Depreciation available to businesses spending more than \$2 million on capital equipment to write off 100% of the cost.

What is the Section 179 Deduction?

Quite simply, Section 179 allows a business to deduct the full cost of new equipment purchased during the tax year up to \$500,000. It is an incentive created by the Federal Government to encourage businesses to invest in equipment.

Who qualifies for the Section 179 Deduction?

The Small Business Jobs and Credit Act extends the 179 deduction of up to \$500,000 to companies that purchase less than \$2,000,000 in business equipment during 2011. In order to qualify, equipment must be placed into service between January 1, 2011 and December 31, 2011. Additionally, the Tax Relief Act of 2010 allows a 100% deduction to continue if more than \$2,000,000 of equipment is purchased. In other words, if you buy enough equipment to exceed the \$500,000 deduction, you can take a "bonus" 100% depreciation on the rest.

Why is this important?

With the enhancements to the section 179 deduction and the availability of bonus depreciation for the remainder of 2011, qualifying companies can greatly accelerate depreciation on equipment purchases thereby reducing taxes in the current year. The savings drop directly to the bottom line. The examples below show savings if you plan to purchase \$39,000 of equipment or \$600,000 worth of equipment

| Examples | Average Deal | Large Deal |
|--|--------------|-------------|
| Equipment Cost | \$39,000 | \$600,000 |
| Section 179 Expense Reduction | <\$39,000> | <\$500,000> |
| Depreciable Equipment Balance | | \$100,000 |
| 100% Bonus Depreciation | | <\$100,000> |
| Total Yr 1 Expense/Depreciation Deductions | \$39,000 | \$600,000 |
| Tax Savings (assuming 35% tax rate) | \$13,650 | \$210,000 |

Additional Considerations: Used Equipment (that is new to you) qualifies for Section 179, however used equipment does NOT qualify for Bonus Depreciation.

ACT NOW - Section 179

is available. The 2011 enhancements offer small businesses a great opportunity to maximize their purchasing power. Consult with a tax professional to verify that your company is leveraging the Section 179 Deduction this year.

Depreciation Bonus Website: www.depreciationbonus.org.

www.whitestarmachinery.com

Used Warranty on 2003 & Newer Units!



2007 Bobcat 463-P, 2,496 Hrs.,
Tulsa,
EN 1034868 \$ 8,950



1996 Bobcat 753-U,
4,035 Hrs., Tulsa
EN 2406505 \$ 7,950



2008 Bobcat S250-P,
3,940 Hrs., Tulsa (AS IS)
EN 1014853 \$ 14,950



2007 Bobcat S250-P,
1,672 Hrs., Tulsa
EN 1043454 \$ 34,950



2008 Bobcat S300-P,
1,169 Hrs., Tulsa
EN 1030642 \$ 33,850



2008 Bobcat T250-R,
1,095 Hrs., Tulsa
EN 1043455 \$ 38,950



2008 Bobcat T320-P,
1,120 Hrs.,
Tulsa,
EN 1047981 \$ 48,800



2002 Bobcat T300-P,
3,560 Hrs., Tulsa
EN 2131236 \$ 24,950



2007 Bobcat T300-U,
2,564 Hrs., Tulsa
EN 2137318 \$ 31,800



2006 Bobcat T300-P
1,585 Hrs, Tulsa
EN 1029372 \$ 37,500



2001 Bobcat 331-U,
3,818 Hrs., Tulsa
EN 2410327 \$ 15,850



2007 Bobcat 430 Excavator w/Cab/
Heat/Air, 1,376 Hrs., Tulsa
EN 2416459 \$ 26,850



2008 Bobcat 331-R, 1,333 Hrs.,
Tulsa,
EN 1015059 \$ 28,850

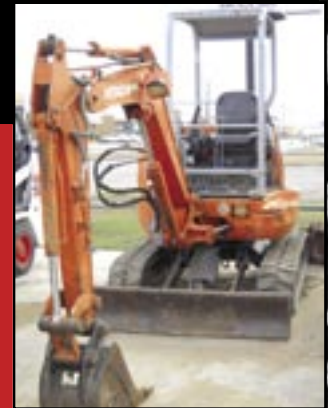
Low Rate Financing Available on Used Rental Fleet
- W.A.C. Call for Details TODAY!



2004 New Holland, LS180-U,
 993 Hrs., Tulsa,
 EN 1045386 \$ 15,850



Felling Trailer - FT-10FP-P
 EN 1047984 \$ 1,950



2000 Hitachi, EX27U-P,
 2,081 Hrs., Tulsa,
 EN 1036638 \$11,300

**MORE Used
 Equipment on our
 Website:**



www.whitestarmachinery.com

MISCELLANEOUS EQUIPMENT

| YEAR | MFG. | MODEL | DESCRIPTION | EQUIP. # | PRICE | COMMENTS |
|------|-------------|--------------|--------------------|----------|--------|---------------|
| | Whiteman | HTN24NTCSL-P | Ride on trowel | 1032985 | \$4995 | |
| | Whiteman | B48HQP-U | Walk behind trowel | 1031791 | \$ 695 | |
| | Allen | 446BASIC-U | Walk behind trowel | 1031792 | \$ 695 | |
| 2005 | Gorman Rupp | 12D-GX160-R | 2 " Water pump | 2413943 | \$ 695 | |
| 2005 | Clipper | C61TD26-R | 61 HP Concrete saw | 2414202 | \$6995 | |
| 2004 | Clipper | C61TD30-R | 61 HP Concrete saw | 2412942 | \$6995 | |
| 2005 | Clipper | C61TD30-R | 61 HP Concrete saw | 2414170 | \$6995 | |
| 2003 | Edco | TG10-11H-R | Turbo Grinder | 2412598 | \$1585 | |
| 2001 | MBW | R461R-R | Rammer | 2410915 | \$875 | |
| 1998 | MBW | R450RLP-R | Rammer | 2407732 | \$995 | |
| 2000 | MBW | SP125-R | Soil Pick | 2409498 | \$275 | |
| 2006 | Bobcat | 6958949-R | Drop Hammer | 2415189 | \$5950 | |
| 2007 | Bobcat | 6811383-P | 74" Combo Bucket | 1027081 | \$2950 | |
| 2006 | Bobcat | 6959135-P | LT112 Trencher | 2414849 | \$2785 | Fits MT50-463 |



Boss Insulated Lined Gloves

Insulated with Thinsulate® insulation that traps & holds body heat
Reflective fingers
Sure grip palm
Waterproof
Breathable

Part# 4250
Size L & XL \$ 8.99



Hygrade Winter Hard Hat Liner

Part# 985 \$ 4.99



Leather Gloves (lined)

Part# 3250T \$ 5.99



Kraft Scoop Shovel
Part# GG868
\$ 17.99

For all your Supply Needs—

Call White Star

918.622.7787

WHITE STAR



NEW!

monster treads



New Toys Now Available!

Toys feature rugged construction for hours of fun play time.

6989053S & 6989053U - Monster Treads Skid-Steer Loader & Utility Vehicle

- Super bouncy tires
- All-terrain steering
- Aproximately 4" inches tall

Priced at \$7.99 Ea.

6989052 - Bobcat E35 Compact Excavator Lights & Sound Toy

- Features rugged construction for hours of fun play time
- Push buttons activate light, back-up alarm, and engine sounds
- Body rotates 360 degrees, door opens, and rolling tracks
- Fully functioning arm with positional bucket
- Approximately 4" tall

Priced at \$19.99 Ea.



Warning: Choking Hazard - Small Parts. Not for children under 3.



Bobcat®



NON-MARKING MULTI-BAR LUG RUBBER TRACKS



DON'T leave your MARK!

- MT50, MT52, T180 & T190 non-marking tracks have arrived!
- This track is a must for loaders used in applications where skid marks are non acceptable
- Better wear resistance than competitor's standard non-marking gray rubber tracks
- Multi-season track works in a variety of conditions
- Multi-lug pitch system and double offset tread pattern deliver a smoother, softer ride
- Proprietary jointless continuous cable belting technology for a strong structure
- Proprietary rubber compound formula for good wear performance
- Lug design contains the growth of cuts and cracks and increases tensile track strength



*Also available for other models,
SPECIAL ORDER ONLY!
Call 918.622.7787 or 800.324.7368
for pricing information!*



Bobcat®

M-Series Large Frame Compact Loader



M-Series Rubber Bumper Kit

(Special Order Item ONLY!)

Part #7203665

\$ 73.55

Used to protect the rear of the loader from becoming damaged due to scraping or contact with objects in confined work spaces.

Not designed to provide exclusive protection when operating the machine in reverse mode. Please follow all required safe operating procedures when operating a compact loader.

NOW IN HD!

Bobcat® Heavy Duty Orange Bristles have a minimum of 15% more poly than before. Plus, they're heavier than most bristles on the market. The result? Sweeping jobs are done right the first time.

These durable, longer-lasting high-quality bristles bring more working action to the ground and offer more hours of use between bristle changes, no matter what surface you're sweeping.

Available in several sizes to fit Bobcat attachments—along with many other brands of sweepers and angle brooms—there's a sweeper bristle to meet your needs: poly resin, steel wire, poly-wire combination and gutter brush.



Take Heavy Duty to a Whole New Level with Bobcat Poly Bristles!
(Fits 60" & 72" sweepers)

Part #6989142 - Bristle, Poly/Wire Combo, 6 3/8 x 21 Flat - 25 \$ 11.68

WHITE STAR MACHINERY & SUPPLY CO.
5401 S. Mingo Rd.
Tulsa, OK 74146

PRSRT STD
U.S. POSTAGE
PAID
WICHITA KS
Permit No. 482

www.whitestarmachinery.com

2-Year/ 2,000 Hr Engine/Power Train **WARRANTY**

Compact Excavators



Authorized  Bobcat Dealer

 **Bobcat**